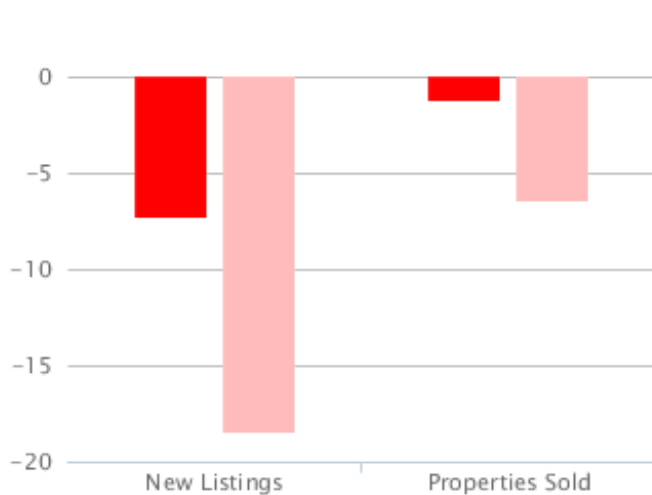




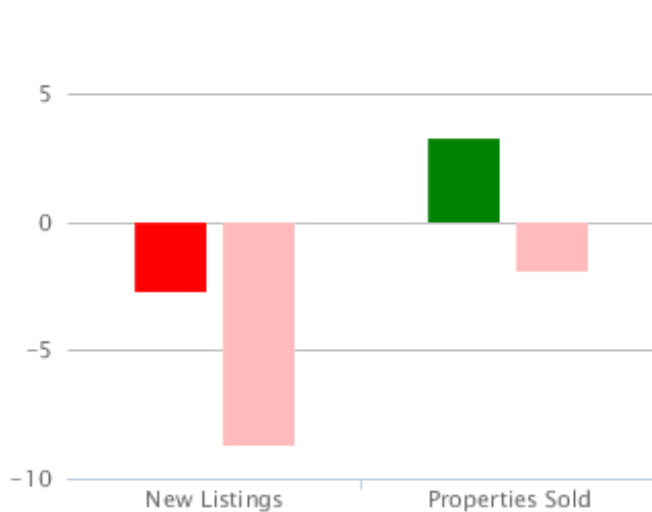
Monthly % Changes for November 2012



| | New Listings | | Properties Sold | |
|-----------------|--------------|--------|-----------------|--------|
| | Nov 12 | Nov 11 | Nov 12 | Nov 11 |
| NATIONAL | -7.3 | -18.5 | -1.2 | -6.4 |
| Central England | -7.1 | -26.9 | 3.2 | -5.9 |
| East Anglia | -11.7 | -21.3 | -9.4 | -12.0 |
| East Midlands | -10.0 | -18.9 | -4.8 | 9.0 |
| London | -2.3 | 7.8 | -9.9 | -11.0 |
| North East | -23.8 | -10.2 | 44.1 | 18.8 |
| North West | 13.0 | -18.6 | 15.3 | -15.0 |
| Scotland | -12.9 | -23.9 | 5.4 | 12.0 |
| South East | -18.6 | -3.5 | -7.1 | -9.6 |
| South West | -4.7 | -23.2 | 4.0 | 15.7 |
| Wales | -14.0 | -25.7 | -2.6 | -3.1 |
| West Midlands | -13.3 | -15.2 | -4.3 | -15.9 |
| Yorks & Humber | -2.2 | -21.5 | 0.9 | -11.6 |

Month Caption for graph

% Changes for September - November 2012

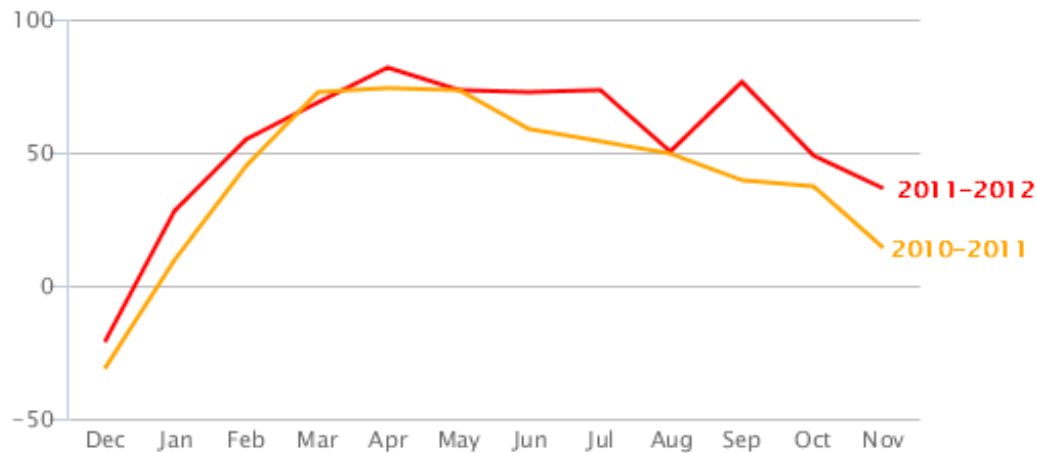


| | New Listings | | Properties Sold | |
|-----------------|--------------|--------------|-----------------|--------------|
| | Sep - Nov 12 | Sep - Nov 11 | Sep - Nov 12 | Sep - Nov 11 |
| NATIONAL | -2.7 | -8.7 | 3.3 | -1.9 |
| Central England | -2.9 | -8.5 | 6.6 | 2.2 |
| East Anglia | -4.9 | -8.5 | -0.9 | -0.7 |
| East Midlands | -1.9 | -7.7 | 1.6 | 4.0 |
| London | -0.2 | 1.8 | 4.6 | -3.7 |
| North East | -2.4 | -7.9 | 23.1 | -4.8 |
| North West | 5.4 | -10.4 | 8.0 | -1.7 |
| Scotland | -8.2 | -9.5 | -1.8 | -0.5 |
| South East | -1.4 | -7.2 | 5.3 | -2.6 |
| South West | -1.0 | -13.1 | 7.7 | -0.5 |
| Wales | -9.6 | -15.3 | 3.3 | -9.0 |
| West Midlands | -3.3 | -5.1 | 0.3 | -1.9 |
| Yorks & Humber | -1.3 | -9.4 | 3.4 | -6.9 |



New Listings

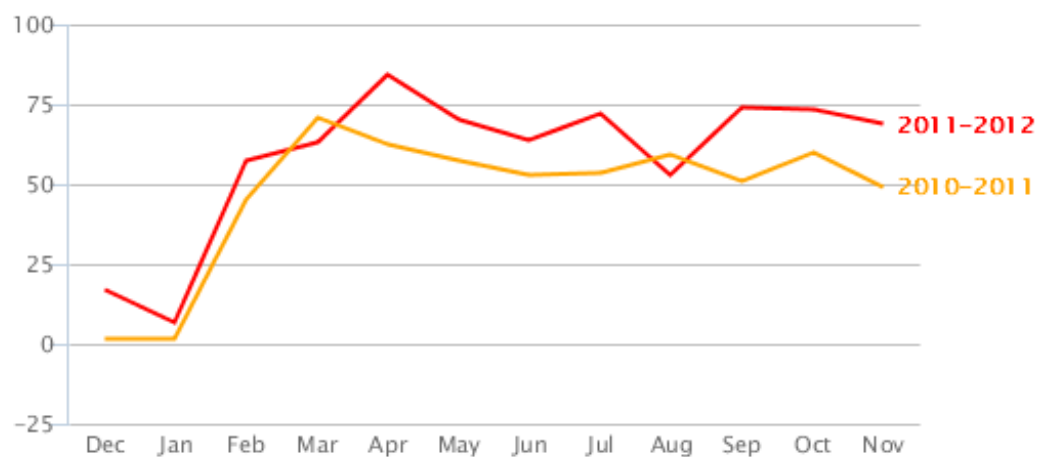
% Change over last 12 months vs previous 12 months



Yearly new caption

Properties Sold

% Change over last 12 months vs previous 12 months



Yearly caption 2



Ben Brookes

Managing Director of Agency Express

Stephen has over 20 years estate agency experience, was instrumental in the formation of the UK's first estate agency franchise company and latterly, headed up the franchising division of Alliance & Leicester Property Services.

Editors Notes

Agency Express was formed in 1998 by Stephen Watson an estate agent over 20 years, to specifically to provide a nationwide board erection and management service for corporate and independent estate agencies via a network of franchisees. Today, Agency Express is the UK's largest estate agency board company with one in four boards being erected and serviced by our franchisees.

Estate agency boards can be seen on virtually every street in the UK and every one of these boards needs to be erected, changed to 'Sold' and, finally, be removed. In short, it is a multi-million pound business, the results of which give a very visible indication of the condition of the UK residential property market..

- The UK's only nationwide estate agency board company
- Over 60% of estate agents use Agency Express
- Industry leading on-line board management system SignMaster3
- Carrying out over 100,000 property visits per month
- Winners of 8 estate agency 'Supplier of the Year' awards

UK-wide month-on-month percentage last 12 months

| | For Sale boards erected | Sold boards instructed |
|--------|-------------------------|------------------------|
| Nov 12 | -7.3% | -1.2% |
| Oct 12 | -15.8% | -0.9% |
| Sep 12 | 17.3% | 13.2% |
| Aug 12 | -14.1% | -11.3% |
| Jul 12 | 5.6% | 8.7% |
| Jun 12 | -4.4% | -6.3% |
| May 12 | -5.5% | -7.2% |
| Apr 12 | 9.5% | 13.3% |
| Mar 12 | 10.5% | 5.2% |
| Feb 12 | 18.5% | 42.9% |
| Jan 12 | 63.1% | -6.0% |
| Dec 11 | -32.4% | -23.6% |