

Monthly % Changes for July 2016



	New Listings		Properties Let	
	Jul 16	Jul 15	Jul 16	Jul 15
NATIONAL	3.6	-1.5	-5.2	3.0
Central England	4.3	12.2	7.1	4.2
East Anglia	5.7	-7.7	-12.2	6.2
East Midlands	8.8	-11.1	3.7	15.7
London	-0.5	-15.6	-12.8	-3.0
North East	-10.3	13.9	-18.5	12.8
North West	12.8	-2.2	-4.9	3.7
Scotland	5.4	10.7	-7.8	15.5
South East	-2.4	-12.5	-4.6	-2.1
South West	-2.4	20.9	-6.4	7.5
Wales	-3.1	-6.3	-6.9	3.2
West Midlands	9.1	4.4	2.2	-9.5
Yorks & Humber	8.1	-7.3	-2.0	3.5

% Changes for May - July 2016

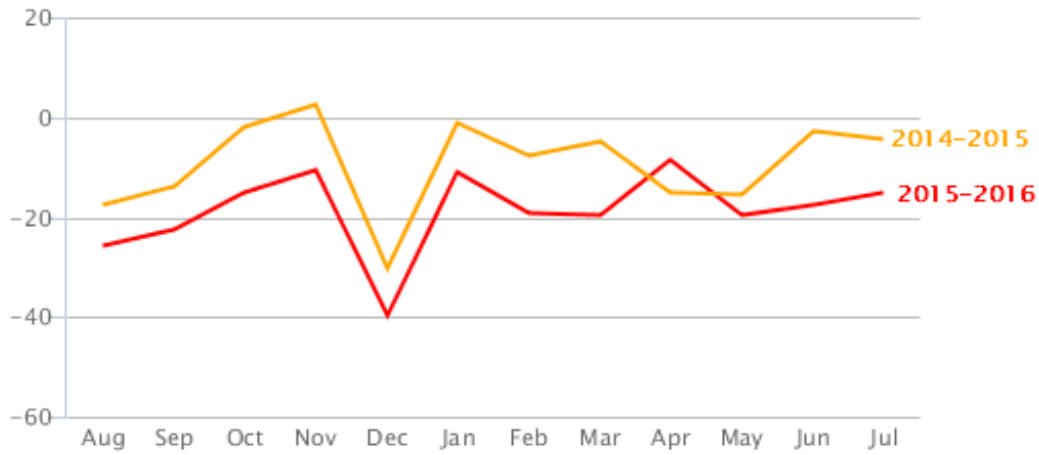


	New Listings		Properties Let	
	May - Jul 16	May - Jul 15	May - Jul 16	May - Jul 15
NATIONAL	-2.5	4.2	-2.7	5.6
Central England	-3.0	6.6	-2.4	10.1
East Anglia	-1.9	4.4	-2.3	5.3
East Midlands	-5.4	2.3	2.2	8.7
London	-2.1	9.5	-10.4	8.2
North East	-0.8	12.5	-6.1	12.9
North West	-0.9	1.6	-3.0	6.7
Scotland	-2.6	3.7	0.1	8.9
South East	-5.4	3.4	-3.3	2.9
South West	-3.2	6.7	-1.5	3.0
Wales	-6.2	1.2	-5.6	6.3
West Midlands	2.0	0.7	-0.4	0.8
Yorks & Humber	-2.5	2.8	1.3	5.4



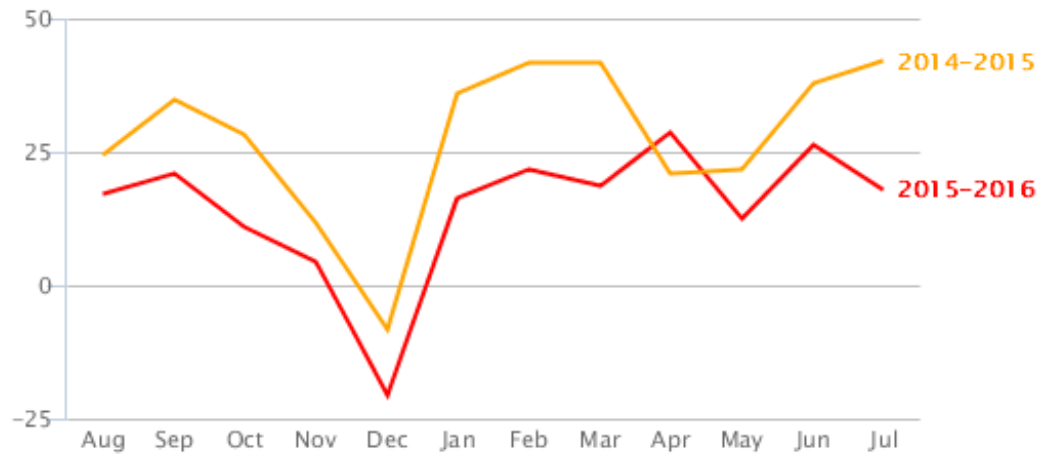
New Listings

% Change over last 12 months vs previous 12 months



Properties Let

% Change over last 12 months vs previous 12 months





Ben Brookes

Managing Director of Agency Express

Stephen has over 20 years estate agency experience, was instrumental in the formation of the UK's first estate agency franchise company and latterly, headed up the franchising division of Alliance & Leicester Property Services.

Editors Notes

Agency Express was formed in 1998 by Stephen Watson an estate agent over 20 years, to specifically to provide a nationwide board erection and management service for corporate and independent estate agencies via a network of franchisees. Today, Agency Express is the UK's largest estate agency board company with one in four boards being erected and serviced by our franchisees.

Estate agency boards can be seen on virtually every street in the UK and every one of these boards needs to be erected, changed to 'Sold' and, finally, be removed. In short, it is a multi-million pound business, the results of which give a very visible indication of the condition of the UK residential property market..

- The UK's only nationwide estate agency board company
- Over 60% of estate agents use Agency Express
- Industry leading on-line board management system SignMaster3
- Carrying out over 100,000 property visits per month
- Winners of 8 estate agency 'Supplier of the Year' awards

UK-wide month-on-month percentage last 12 months

	To Let boards erected	Let By boards instructed
Jul 16	3.6%	-5.2%
Jun 16	1.8%	9.6%
May 16	-11.9%	-11.1%
Apr 16	12.5%	8.6%
Mar 16	0.6%	-3.0%
Feb 16	-8.1%	4.5%
Jan 16	43.6%	46.1%
Dec 15	-31.7%	-23.9%
Nov 15	3.4%	-6.2%
Oct 15	11.5%	-7.2%
Sep 15	4.2%	3.7%
Aug 15	-13.2%	-9.2%